

RE4-F04A/B (4F20E), JF403E, LJ4A-EL (FWD 4-Spd)

ILL. NO.	PART NUMBER	PER CAR	DESCRIPTION	YEARS
GEO:				
	Storm	1990-93	1.6 & 1.8 Litre	JF403E
ISUZU:				
	Impulse	1990-92	1.8 Litre	JF403E
MAZDA:				
	Millenia	1994-02	2.3 Litre	LJ4A-EL
MERCURY:				
	Villager	1993-02	All	4F20E / RE4-F04A
NISSAN:				
	Altima	1993-04	All	RE4-F04A/B
	Altima	2005-06	2.5 Litre	RE4-F04B
	Maxima	1992-99	DOHC	RE4-F04A
	Maxima	2000-04	3.0 & 3.5 Litre	RE4-F04A/B
	Sentra (w/2.5 Litre)	2002-06	2.5 Litre	RE4-F04B
	Quest	1993-06	All	RE4-F04A/B
INFINITI				
	I30	1996-01	All	RE4-F04A/B
	I35	2002	3.5 Litre	RE4-F04B
ILL. NO.	PART NUMBER	PER CAR	DESCRIPTION	YEARS
---	TMRE4-F04A		Technical Manual Nissan/Infiniti	1992-06
---	TM4F20E		Technical Manual Mercury	1993-02
REBUILDER BOX KITS				
---	K8700-S		Master Kit (w/o Steels) JF403E	1990-93
---	K8700C-S		Master Kit (w/o Steels) RE4-F04A	92-5/94
---	K8700D-S ¹		Master Kit (w/o Steels) RE4-F04A/B (4F20E), Except Below	6/94-06
---	K8700DG-S ¹		Master Kit (w/o Steels) RE4-F04A/B, Maxima 1/03-06, Quest 5/03-06, Altima 1/04-06	L/02-06
---	K8700F-S ²		Master Kit (w/o Steels) LJ4A-EL - Millenia	1994-02
Steel Plate Sub-Kits:				
---	K8700-9 ³		Steel Plate Kit JF403E	1990-93
---	K8700C-9		Steel Plate Kit RE4-F04A/B (4F20E), Except Below	1992-06
---	K8700DG-9		Steel Plate Kit RE4-F04A/B, Maxima 1/03-06, Quest 5/03-06, Altima 1/04-06	L/02-06
---	K8700F-9		Steel Plate Kit LJ4A-EL - Millenia	1994-02
¹ Some Units may require a High Clutch Bonded Piston, please order K87843DF separately. ² Some pre-6/94 units will require (4) 87302C High Frictions , see below. ³ For Isuzu applications , please order (4) 87303 High Steels .				
OVERHAUL KITS AND GASKET SETS				
---	K87900		Overhaul Kit JF403E / LJ4A-EL	1990-02
---	K87900C		Overhaul Kit RE4-F04A/B (4F20E)	1992-06
---	K87900-1		Gasket and Rubber Kit JF403E / LJ4A-EL	1990-02
---	K87900C-1		Gasket and Rubber Kit RE4-F04A/B (4F20E)	1992-06
GASKET AND RUBBER COMPONENTS				
1E	87170	1	Pan Gasket JF403E	1990-93
1E	87170C	1	Pan Gasket RE4-F04A/B (4F20E)	1992-06
1E	87170F	1	Pan Gasket LJ4A-EL	1994-02

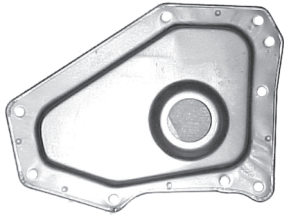
RE4-F04A/B (4F20E), JF403E, LJ4A-EL (FWD 4-Spd)

ILL. NO.	PART NUMBER	PER CAR	DESCRIPTION	YEARS
METAL CLAD SEALS				
10A	87526C	1	Converter (44x59x6.8mm) All	1990-06
11E	75551	1	Right Axle (33x59x11mm) RE4F04A/B (4F20E)	1992-06
11E	87551	1	Right Axle (35x54.8x9mm) JF403E	1990-93
11E	70551	1	Right Axle (35x56x9mm) LJ4A-EL - Millenia	1994-02
12E	87551	1	Left Axle (35x54.8x9mm) JF403E	1990-93
12E	70551	1	Left Axle (35x56x9mm) LJ4A-EL - Millenia	1994-02
12E	87552C	1	Left Axle (w/Open Diff. - 39x59x11mm) RE4-F04A/B (4F20E)	1992-06
12E	75551D	1	Left Axle (w/Viscous Diff. - 46x90x11mm) RE4-F04A/B (4F20E)	1992-06
SEALING RINGS				
---	K87901	1	Sealing Ring Kit All	1990-06
CLUTCH PLATES				
20A	87306	2	Reverse Friction 28T, .063" - 5.480" O.D.	1990-02
20A	87306DG	2	Reverse Friction 28T, .063" - 5.800" O.D.	L/02-06
21A	87307	2	Reverse Steel 30T, .071" - 4.954" I.D.	1990-02
21A	87307DG	2	Reverse Steel 32T, .071" - 4.955" I.D.	L/02-06
23B	87302	3-4	High Friction (JF403E) 20T, .063"	1990-93
23B	87302C	3-4	High Friction 21T, .063" - 4.415" O.D.	92-5/94
23B	87302D	3-4	High Friction 24T, .063" - 4.415" O.D.	6/94-06
23B	87302DG	3-4	High Friction 24T, .059" - 4.415" O.D.	L/02-06
24B	87303	1-5	High Steel (JF403E, Except Below) 28T, .087" - 94mm I.D.	1990-92
24B	87303C	1	High Steel (RE4-F04A/B (4F20E) 28T, .079"	1992-06
24B	87303D	6-7	High Steel (RE4-F04A/B (4F20E) 28T, .055"	1992-06
24B	87303C	1	High Steel (Millenia) 28T, .079" - 92mm I.D.	1994-02
24B	87303D	6	High Steel (Millenia) 28T, .055" - 92mm I.D.	1994-02
24B	87303	1	High Steel (Geo Storm) 28T, .087" - 94mm I.D.	1992-93
24B	87303F	6	High Steel (Geo Storm) 28T, .079" - 94mm I.D.	1992-93
27B	87321C	5-7	Low/Reverse Friction 32T, .071" - 6.450" O.D.	1990-06
28B	87322C	5-7	Low/Reverse Steel 10T, .071" - 5.900" I.D.	1990-06
30C	87304	4-6	Forward Friction (Except Millenia) 32T, .063"	1990-06
30C	87304F	4	Forward Friction (Millenia) 32T, .055"	1994-02
31C	87305	4-6	Forward Steel (Except Millenia) 32T, .071" - 4.920" I.D.	1990-06
31C	87305F	4	Forward Steel (Millenia) 32T, .055" - 4.920" I.D.	1994-02
33C	87308	3	Overrun Friction 20T, .063" - 4.935" O.D.	1990-06
34C	87309	3-5	Overrun Steel 8T, .063" - 4.445" I.D.	1990-06
BANDS				
40A	87714	1	2-4 Band JF403E / LJ4A-EL	1990-02
40A	87714C	1	2-4 Band RE4-F04A/B (4F20E)	1992-06
BUSHINGS				
---	K87980C	1	Bushing Assortment Kit RE4-F04A/B (4F20E)	1992-06
50A	87005A	1	Pump Bushing JF403E / LJ4A-EL	1990-02
50A	87005C	1	Pump Housing RE4-F04A/B (4F20E)	1992-06
TRANSMISSION OIL FILTERS				
60D	87600 ⁴	1	Oil Filter JF403E	1990-93
60D	87600C ⁴	1	Oil Filter (Shallow Pan) RE4-F04A/B (4F20E) w/.325" Inlet	1992-06

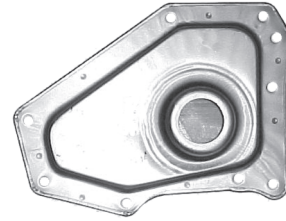
RE4-F04A/B (4F20E), JF403E, LJ4A-EL (FWD 4-Spd)

ILL. NO.	PART NUMBER	PER CAR	DESCRIPTION	YEARS
TRANSMISSION OIL FILTERS - Cont'd.				
60D	87600DF ⁴	1	Oil Filter (Deep Pan) RE4-F04A/B (4F20E) w/1.25" Inlet	2002-06
60D	87600F ⁴	1	Oil Filter LJ4A-EL - Millenia	1994-02
61D	ATK-136	1	Oil Filter Kit (Shallow Pan) RE4-F04A/B (4F20E) w/.325" Inlet	1992-06
61D	ATK-221	1	Oil Filter Kit (Deep Pan) RE4-F04A/B (4F20E) w/1.25" Inlet	2002-06
61D	ATK-140	1	Oil Filter Kit JF403E	1990-93
61D	ATK-166	1	Oil Filter Kit LJ4A-EL - Millenia	1994-02
⁴ Please See Filter Pictures on Page 6.9-2 for Jatco or 10.4-6 for Nissan Visual Identification.				
SPRAGS AND ROLLER CLUTCHES				
65B	87813	1	Low Roller Clutch	1990-06
66C	87814C	1	Forward Sprag	1990-06
SHIFT ENHANCEMENTS				
---	K87944	1	Shift Kit (TransGo) LJ4A-EL	1994-02
<p>Addresses: Clutch Drum Blowout and Planetary Failure Caused by High-Line and Low-Lube. Falls Out of Gear at a Stop Sign, HOT. Burned 3-4 Clutches. No 2nd. No 3rd After a 3-2 Kickdown. 3rd Clutch Inner Seal Leaks. Corrects Soft 1-2 and 2-3. Designed for Nitrous and Turbo Charging. Includes High Temp Rings.</p>				
---	K87944C	1	Shift Kit (TransGo) RE4-F04A / 4F20E	1992-02
<p>Addresses: Direct Drum Blowout Caused by High Line, Burned 3-4 Clutches, No 2nd, No 3rd After 3-2 or 4-2 Kickdown, No Movement HOT. Corrects Soft 1-2 and 2-3 Shifts. Includes High-Temp Rings.</p>				
---	K87944CB	1	Shift Kit (TransGo) RE4-F04B	4/99-06
<p>Addresses: Rough 2nd Cold, No 3rd After a 3-2 or 4-2 Kickdown. 3rd Clutch Inner Seal Leaks. Corrects Hard and Soft 1-2, Long 2-3 at Heavy Throttle, Long Shifts That Hit the Rev Limiter. Provides a Firmer 4th and Lockup. Includes High-Temp Rings.</p>				
----	LJ4AEL-HD2		Reprogramming Kit (TransGo) LJ4A-EL	1994-02
<p>Addresses: Clutch Drum Blowout and Planetary Failure Caused by High-Line and Low-Lube. Falls Out of Gear at a Stop Sign, HOT. Burned 3-4 Clutches. No 2nd. No 3rd After a 3-2 Kickdown. 3rd Clutch Inner Seal Leaks. Corrects Soft 1-2 and 2-3. Designed for Nitrous and Turbo Charging. Includes High Temp Rings and Trick Valve for Hot Rod and Street Show-off Cars.</p>				
---	RE4F04A-HD2		Reprogramming Kit (TransGo) RE4-F04A / 4F20E	1992-02
<p>Addresses: Falls Out of Gear HOT at a Stop, No 3rd After a 3-2 or 4-2 Kickdown. 3rd Clutch Inner Seal Leaks. Corrects Hard and Soft 1-2, Long 2-3 at Heavy Throttle, Long Shifts That Hit the Rev Limiter. Provides a Firmer 4th and Lockup. Designed for Nitrous and Turbo Charging. Includes Trick Valve.</p>				
---	RE4F04B-HD2		Reprogramming Kit (TransGo) RE4-F04B	4/99-06
<p>Addresses: Rough 2nd Cold, No 3rd After a 3-2 or 4-2 Kickdown, 3rd Clutch Inner Seal Leaks. Corrects Hard and Soft 1-2, Long 2-3 at Heavy Throttle, Long Shifts That Hit the Rev Limiter. Provides a Firmer 4th and Lockup. Designed for Nitrous and Turbo Charging. Includes Trick Valve for Hot Rod and Street Show-Off.</p>				
ELECTRONIC COMPONENTS AND REMAN VALVE BODIES				
70E	87879	1	Solenoid Pack JF403E	1990-93
70E	87879C ⁵	1	Solenoid Pack (RE4 w/Case Seal and 21" Long External Wiring Lead)	1992-02
70E	87879B ⁵	1	Solenoid Pack (RE4 w/No External Wiring, 7" Lead)	4/99-06
70E	87879F	1	Solenoid Pack LJ4A-EL - Millenia	1994-02
⁵ Includes All of the Solenoids for the Unit. See Page 10.3-6 For Solenoid Illustrations.				
150E	35-105	1	Reman Valve Body RE4 w/21" Long External Wiring Lead	1992-02
150E	35-106	1	Reman Valve Body RE4 w/7" Long External Wiring Lead	4/99-06

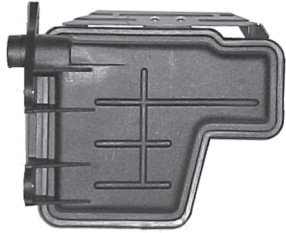
Nissan Front Wheel Drive Filter Identification Pictures



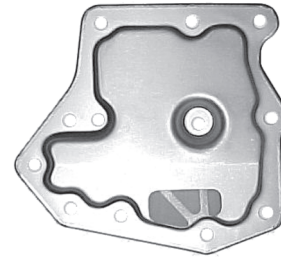
65600R
RL3-F01A 2WD, 1981-86
RL3-F01A 4WD, 1989-90



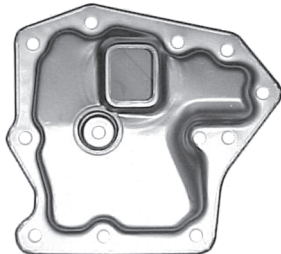
65601R
RL3-F01A 2WD
1987-92



75600
RE/RL4-F02A



87600A
RE/RL4-F03A/B



87600C
RE4-F04A, Ford 4F20E
1992-On



87600DF (Deep Pan)
Nissan RE4-F04B
2002-On