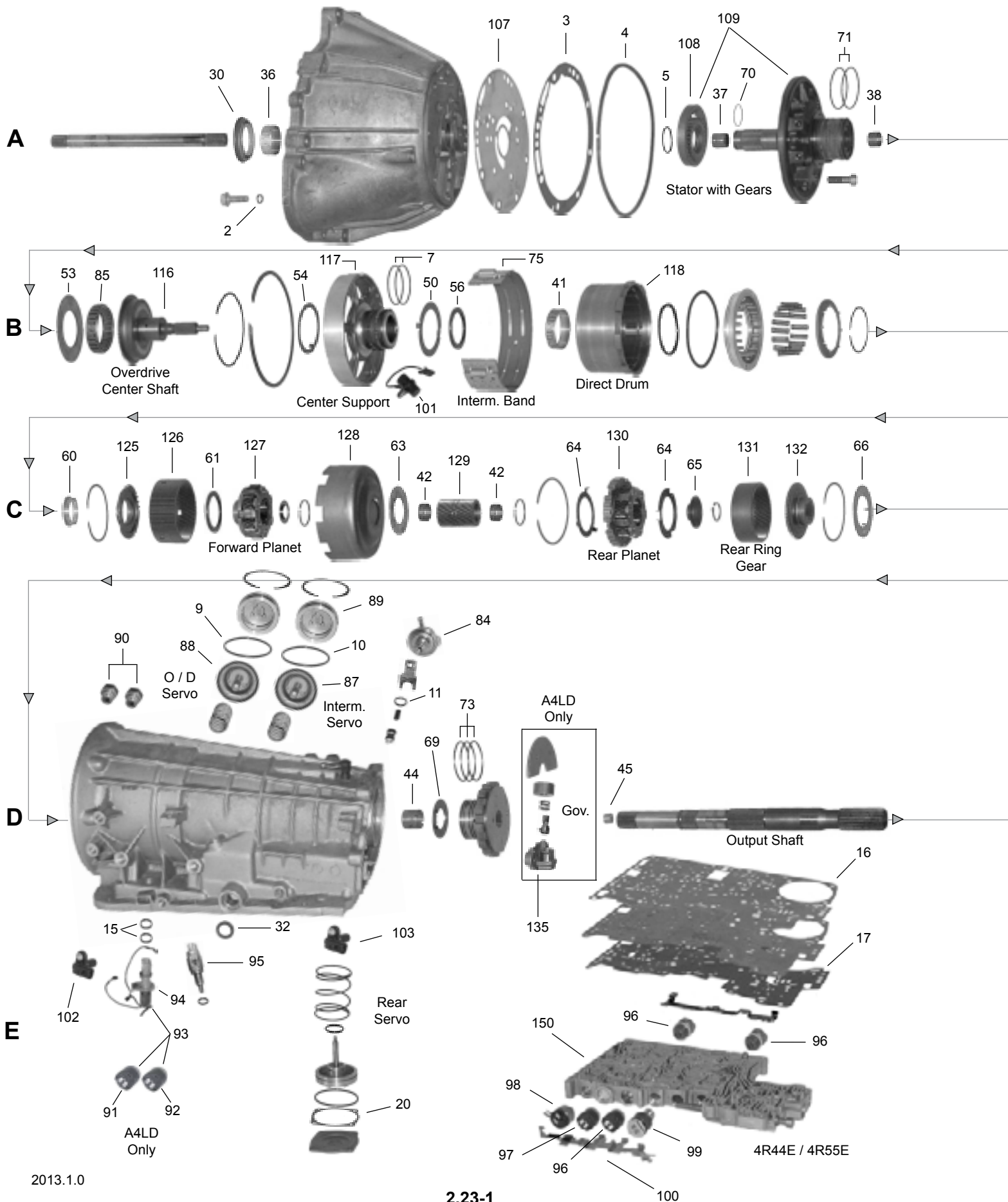
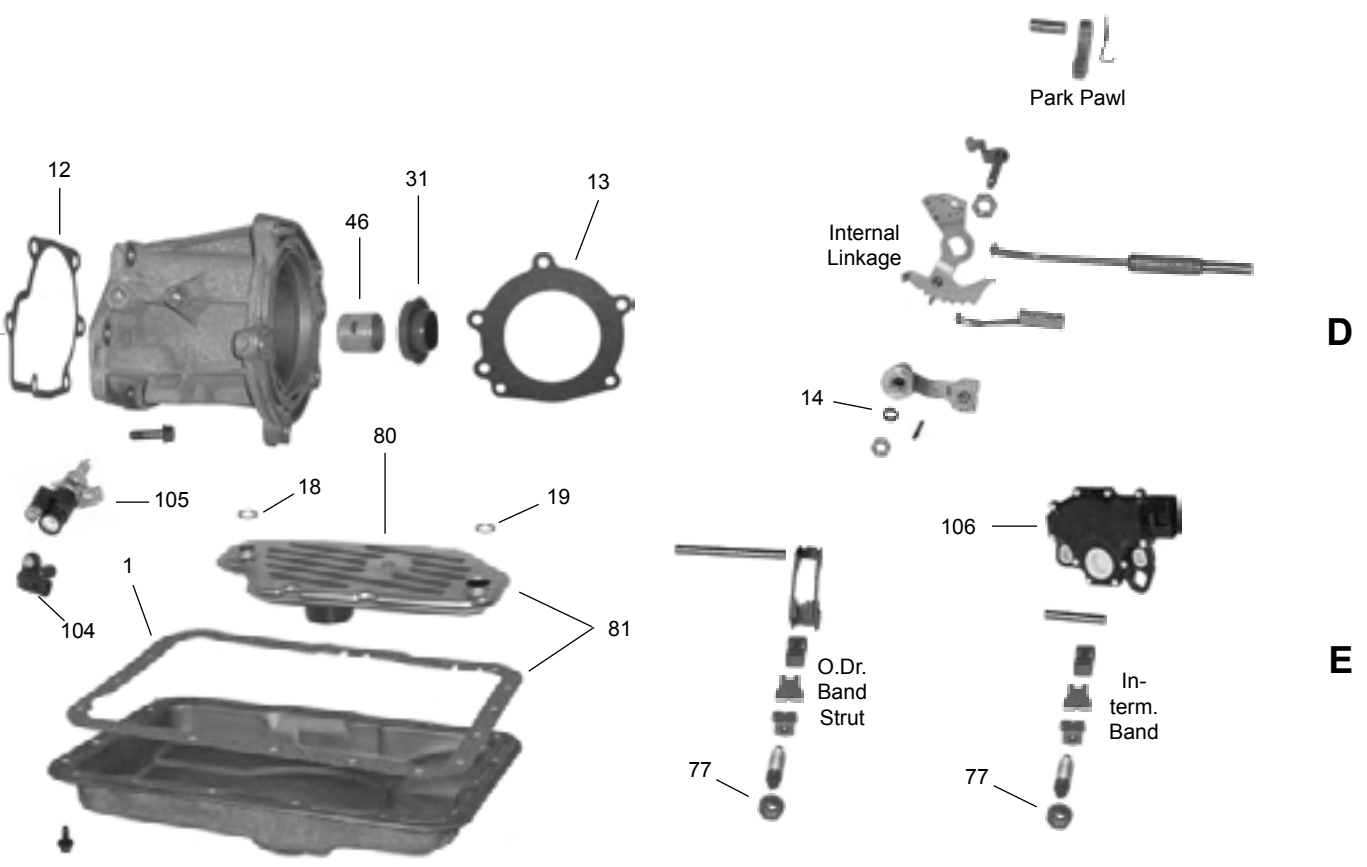
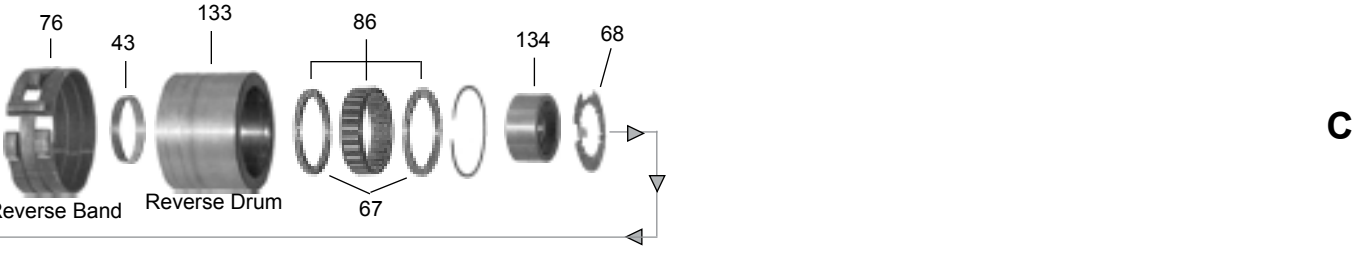
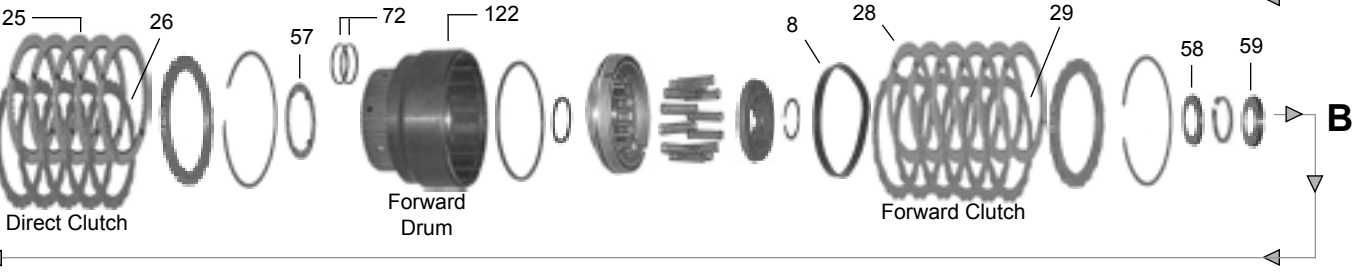
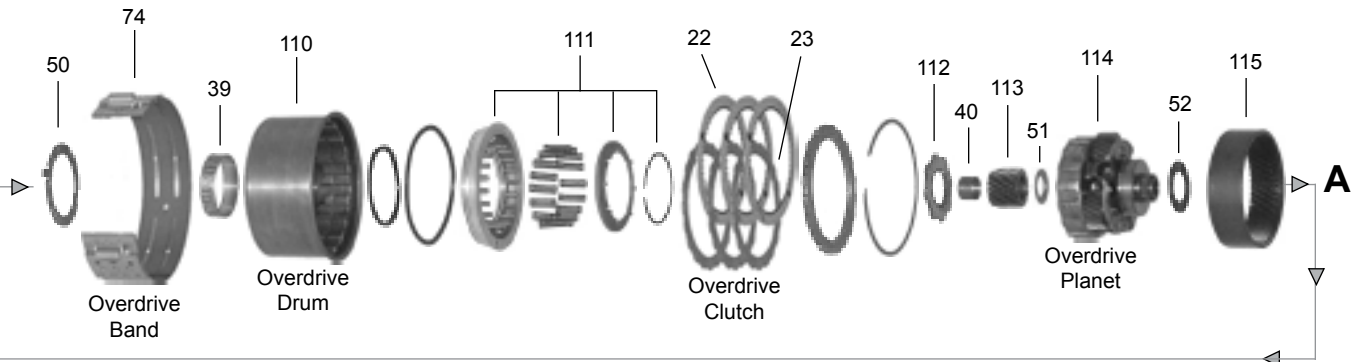


C3 / A4LD / 4R44E / 4/5R55E

RWD 3/4 Speed





FORD C3 / A4LD and 4R44/55E / 5R44E/55E

ILL. NO.	PART NUMBER	PER CAR	DESCRIPTION	YEARS
	TMA4LD		Technical Manual	1985-96
	TMA4LDU		Technical Manual/Update Book	1985-96
	TM4R44/55E		Technical Manual 4R44E/55E	1995-96
	TM5R55E		Technical Manual	1997-On
REBUILDER BOX KITS				
---	MRK6600A-S		Master Rebuilder Kit (w/o Steels) C3	1974-89
---	MRK6600F-S¹		Master Rebuilder Kit (w/o Steels) A4LD	1985-89
---	MRK6600H-S¹		Master Rebuilder Kit (w/o Steels) A4LD	1990-96
---	MRK6600L-S¹		Master Rebuilder Kit (w/o Steels) 4R44E/55E	1995-96
---	MRK5800-S¹		Master Rebuilder Kit (w/o Steels)	1997-On
¹ Filter and Overdrive Band are not included, please order separately as required. If Borg-Warner Intermediate Band is desired, please order kits with MBK prefix.				
---	K6600A-S		Master Kit (w/o Steels) C3	1974-89
---	K6600F-S		Master Kit (w/o Steels) A4LD	1985-89
---	K6600H-S		Master Kit (w/o Steels) A4LD	1990-96
---	K6600L-S		Master Kit (w/o Steels) 4R44E/55E	1995-96
---	K5800-S		Master Kit (w/o Steels)	1997-On
Steel Plate Sub-Kits:				
---	K6600A-9		Steel Plate Kit C3	1974-77
---	K6600B-9		Steel Plate Kit C3	1978-89
---	K6600F-9		Steel Plate Kit A4LD	1985-89
---	K6600H-9		Steel Plate Kit A4LD, 4R44/55E	1990-96
---	K5800-9		Steel Plate Kit	1997-On
OVERHAUL KITS, GASKET SETS AND SEAL KITS				
---	K66900		Overhaul Kit C3	1974-89
---	K66900F		Overhaul Kit A4LD	1985-96
---	K66900L		Overhaul Kit 4R44E/55E	1995-96
---	K58900		Overhaul Kit	1997-On
---	K66900-1		Gasket and Rubber Kit C3	1974-89
---	K66900F-1		Gasket and Rubber Kit A4LD	1985-96
---	K66900L-1		Gasket and Rubber Kit Except A4LD	1995-On
---	K66900C-7		Front Pump Seal-Up Kit All	1974-96
---	K58900-7		Front Pump Seal-Up Kit All	1997-On
---	K66900-8		Complete External Seal-Up Kit C3	1974-89
---	K66900C-8		Complete External Seal-Up Kit Except C3	1985-96
---	K58900-8		Complete External Seal-Up Kit	1997-On
---	K66900C-3		Valve Body Gasket Kit A4LD	1985-96
---	K66900L-3		Valve Body Gasket Kit Except A4LD	1995-On
GASKET AND RUBBER COMPONENTS				
1E	66170	1	Pan Gasket C3	1974-89
1E	66170C	1	Pan Gasket Except C3	1985-On
2A	66121C	8	Front Pump Bolt Washer	1974-89
2A	66121H	8	Front Pump Bolt O'Ring	1990-On
3A	66101C	1	Front Pump Gasket	1974-96
4A	66100	1	Front Pump Lathe Cut Seal	1974-On
5A	66115L	1	Front Pump Inner Gear O'Ring	1995-On
7B	66125	2	Center Support Seal (Viton) Narrow - .083"	1985-92
7B	66125J	2	Center Support Seal (Viton) Wide - .102"	1993-96
8B	66108	1	Forward Clutch Piston Rubber Cushion Except C3	1985-89
8B	66108H	1	Forward Clutch Piston Rubber Cushion	1990-On

FORD C3/A4LD and 4R44/55E / 5R44E/55E

ILL. NO.	PART NUMBER	PER CAR	DESCRIPTION	YEARS
GASKET AND RUBBER COMPONENTS - Cont'd.				
9D	66124C	1	Overdrive Servo Cover O'Ring From 12/18/85	1986-On
10D	66124C	1	Inter. Servo Cover O'Ring All, From 12/18/85	1986-On
11D	66119	1	Modulator O'Ring	1974-96
---	3291L	1	Oil Filler Tube O'Ring	1974-96
12D	66110	1	Extension Housing Gasket	1974-On
---	66123	4	Cooler Connector O'Ring C3	1974-89
13D	201207F	1	Adapter Housing Gasket (4WD)	1985-On
---	3410L	1	Speedometer Sleeve O'Ring	1974-96
14D	66118	1	Throttle Lever O'Ring (.354" Throttle Shaft)	1974-96
14D	66118Q	1	Throttle Lever Quad Ring (.370" Throttle Shaft)	1974-96
15E	3580L	2	Case Connector O'Ring A4LD	1985-96
15E	66122	2	Case Connector O'Ring 4R44E/55E	1995-96
16E	66105C	1	Valve Body Gasket (Upper) A4LD	1985-96
16E	66105L	1	Valve Body Gasket (Upper) 4R44E/55E	1995-On
17E	66106C	1	Valve Body Gasket (Lower) A4LD	1985-96
17E	66106L	1	Valve Body Gasket (Lower) 4R44E/55E	1995-On
18E	66120B	1	Oil Filter O'Ring (Small) A4LD	1985
18E	66120D	1	Oil Filter O'Ring (Small) All, Except C3	1986-On
19E	66120A	1	Oil Filter O'Ring (Large) A4LD	1985
19E	66120C	1	Oil Filter O'Ring (Large) All, Except C3	1986-On
---	66120	1	Oil Screen Gasket C3	1974-89
---	66118	1	Throttle Lever O'Ring C3	1974-89
---	66118Q	1	Throttle Lever Quad Ring C3	1974-89
20E	66111G	1	Reverse Servo Cover Gasket	1974-On
---	6507B	1	Shift Lever and Linkage Grommet	1974-96
---	3291L	1	Filler Pipe O'Ring C3	1974-On
---	3410L	1	Speedometer Sleeve O'Ring C3	1974-On
---	3410L	2	Speed Sensor O'Rings (Input & Output)	1997-On
---	58122	2	Case Connector O'Ring	1997-On
CLUTCH PLATES				
22A	66304C	2-3	Overdrive Friction 32T, .077" - 4.892" O.D.	1985-89
22A	66310H	2	Overdrive Friction 32T, .068" - 4.892" O.D.	1990-96
22A	58310	2-3	Overdrive Friction (Directional) 16T, .068" - 4.892" O.D.	1997-On
23A	66305A	2-3	Overdrive Steel 20T, .069" - 3.964" I.D.	1985-89
23A	66305H	2	Overdrive Steel 20T, .065" - 3.964" I.D.	1990-On
23A	66305	AR	Overdrive Steel 20T, .077" - 3.964" I.D.	1985-On
25B	66304	4-6	Direct/Reverse Friction (Include C-3) 48T, .077" - 4.892" O.D.	1974-89
25B	66304H	4-6	Direct/Reverse Friction 48T, .068" - 4.892" O.D.	1990-96
25B	58304	4-5	Direct/Reverse Friction (Directional) 48T, .068" - 4.892" O.D.	1997-On
26B	66305A	4-5	Direct/Reverse Steel (C3 1978-89) 20T, .069" - 3.964" I.D.	1978-89
26B	66305H	4-6	Direct/Reverse Steel 20T, .065" - 3.964" I.D.	1990-On
26B	66305	3-5	Direct/Reverse Steel (C3 1974-77) 20T, .077" - 3.964" I.D.	1974-On
26B	58305	4-5	Direct/Reverse Steel 20T, .084" - 3.964" I.D.	1997-On
28B	66321	3-5	Forward Friction (Include C-3) 72T, .077" - 4.655" O.D.	1974-89
28B	66321H	5-6	Forward Friction 72T, .068" - 4.655" O.D.	1990-96
28B	58321	5-6	Forward Friction (Directional) 72T, .068" - 4.655" O.D.	1997-On
29B	66322A	5	Forward Steel (C3 1978-89) 19T, .069" - 3.801" I.D.	1978-89
29B	66322H	5-6	Forward Steel 19T, .065" - 3.810" I.D.	1990-On
29B	66322	3-5	Forward Steel (C3 1974-77) 19T, .077" - 4.824" I.D.	1974-96
METAL CLAD SEALS				
30A	66526	1	Front Pump	1974-96
30A	58526 ²	1	Front Pump Larger O.D.	1997-On

A4LD / 5R55E

FORD C3/A4LD and 4/5R44E/55E - Cont'd.

ILL. NO.	PART NUMBER	PER CAR	DESCRIPTION	YEARS
METAL CLAD SEALS - Cont'd.				
31D	66551HD	1	Extension Housing (Heavy Duty) w/Boot	1974-On
31D	66551A	1	Extension Housing w/o Boot	1974-On
31D	45551	1	Extension Housing (Merkur)	1985-96
32E	26507	1	Manual Lever	1974-On
---	6507B	1	Shift Lever and Linkage Grommet	1985-On
² Some 1985-96 A4LD units that have had a Ford Service Replacement Bellhousing installed will require the 58526 Front Pump Seal.				
BUSHINGS				
---	K66980	1	Bushing Assortment Kit (* Not Included) C3	1974-89
---	K66980G	1	Bushing Assortment Kit (* Not Included) A4LD, 4R44/55E	1985-96
---	K58980	1	Bushing Assortment Kit (* Not Included)	1997-On
36A	66010*	1	Front Pump Bronze	1974-On
36A	66010B	1	Front Pump Babbitt	1974-On
37A	66011	1	Stator Support Front	1974-89
37A	66011H	1	Stator Support (Notched O.D.) Front	1990-On
38A	66002	1	Stator Support Rear	1974-On
39A	66001C	1	Overdrive Drum (Steel Drum)	1985-96
40A	66011	1	O/D Sun Gear	1985-On
41B	66001	1	Intermediate Drum (Cast Iron Drum) 2.368" O.D.	1974-96
41B	66001C	1	Intermediate Drum (Steel Drum) 2.345" O.D.	1985-96
42C	66003	2	Sun Gear	1974-On
43C	66006	1	Reverse Clutch Drum	1974-On
44D	66007	1	Case	1974-96
44D	58434*	1	Case to Output Shaft Roller Bearing	1997-On
45D	37009	1	Output Shaft Pilot Bronze	1985-96
45D	37426*	1	Output Shaft Pilot Bearing 4.0 Litre, All 1997-On	1990-On
46D	66008B	1	Extension Housing Babbitt	1974-On
---	66050C*	1	Governor Bore Repair Sleeve Use w/K66911C Case Cutting Tool	1974-96
THRUST WASHERS AND BEARINGS				
---	K66940	1	Thrust Washer Kit (w/o Selectives) C3	1974-89
---	K66940C	1	Thrust Washer Kit Use w/Aluminum Front Planet	1985-96
---	K66940G	1	Thrust Washer Kit Use w/Steel Front Planet	1985-96
---	K66941	1	Thrust Washer Kit Selectives Only, Plastic Washers	1985-96
---	K58940	1	Thrust Washer Kit (w/Selectives)	1997-On
---	K66941C	1	Pump Selective Thrust Washer Kit #1-6 Only - Metal Washers	1985-96
---	K66942C	1	Thrust Bearing Kit Use w/3 or 4-Pinion Front Planet	1985-96
---	K66942H	1	Thrust Bearing Kit Use w/6-Pinion Front Planet	1985-96
---	K58941	1	Thrust Bearing Kit (w/o Selectives nor Caged Bearings)	1997-On
Note: Thrust Washer and Thrust Bearing Kits do not include Selectives.				
50A,B	K66442	AR	Pump/Center Support Shim (010" Thick - 10 per pack)	1974-96
50A,B	66410A	AR	Pump/Center Support Metal Washer #1055"	1974-96
50A,B	66410B	AR	Pump/Center Support Metal Washer #2059"	1974-96
50A,B	66410C	AR	Pump/Center Support Metal Washer #3065"	1974-96
50A,B	66410D	AR	Pump/Center Support Metal Washer #4069"	1974-96
50A,B	66410E	AR	Pump/Center Support Metal Washer #5073"	1974-96
50A,B	66410F	AR	Pump/Center Support Metal Washer #6077"	1974-96
50A,B	66410J	AR	Pump/Center Support Metal Washer #C093"	1974-96
50A,B	66400A	AR	Pump/Center Support <i>Plastic</i> Washer062"	1974-On
50A,B	66400B	AR	Pump/Center Support <i>Plastic</i> Washer078"	1974-On

FORD C3/A4LD and 4/5R44E/55E - Cont'd.

ILL. NO.	PART NUMBER	PER CAR	DESCRIPTION	YEARS
THRUST WASHERS AND BEARINGS - Cont'd.				
50A,B	66400C	AR	Pump/Center Support <i>Plastic</i> Washer093"	1974-On
50A,B	66400D	AR	Pump/Center Support <i>Plastic</i> Washer109"	1974-On
---	58431	1	Overdrive Bearing Assembly On Pump Stator - Caged	1997-On
51A	66420	1	Overdrive Sun Gear to Carrier Thrust Race	1985-96
52A	66421	1	Overdrive Inner Race Needle Bearing Plastic - 46 Rollers	1985-On
52A	58421N	1	Overdrive Inner Race Needle Bearing Metal - 42 Rollers	2001-On
53B	66409	1	Overdrive Overrunning Clutch Washer	1985-92
54B	66408	1	Center Support Washer (Top/Front)	1985-92
54B	66428	1	Center Support Bearing (Top/Front)	1993-96
54B	58423	1	O/D Center Shaft to Center Support Needle Bearing (Front)	1997-On
45D	37426	1	Output Shaft Pilot Bearing A4LD w/4.0 Litre & All 4R44E/55E	1990-96
---	58432	1	Inter. Brake Drum Bearing Assy. On Center Support - Caged	1997-On
50B	66400A ³	AR	Center Support Plastic Washer Bottom - .062"	1985-96
50B	66400B ³	AR	Center Support Plastic Washer Bottom - .078"	1985-96
50B	66400C ³	AR	Center Support Plastic Washer Bottom - .093"	1985-96
50B	66400D ³	AR	Center Support Plastic Washer Bottom - .109"	1985-96
³ All A4LD Except 1993-96 4.0L units with Snap Type Shell.				
50B	66428	AR	Center Support Bearing (4R44E/55E, 2.380" I.D.) Bottom - .110"	1995-96
50B	66428A	AR	Center Support Bearing (4R44E/55E, 2.380" I.D.) Bottom - .116"	1995-96
50B	66428B	AR	Center Support Bearing (4R44E/55E, 2.380" I.D.) Bottom - .124"	1995-96
50B	66428C	AR	Center Support Bearing (4R44E/55E, 2.380" I.D.) Bottom - .132"	1995-96
50B	58428	AR	Center Support Bearing (2.445" I.D.) Bottom - .110"	1997-On
50B	58428A	AR	Center Support Bearing (2.445" I.D.) Bottom - .116"	1997-On
50B	58428B	AR	Center Support Bearing (2.445" I.D.) Bottom - .124"	1997-On
50B	58428C	AR	Center Support Bearing (2.445" I.D.) Bottom - .132"	1997-On
50B	58428N	AR	Center Support Bearing (2.525" I.D.) Bottom - .110"	2001-On
50B	58428NA	AR	Center Support Bearing (2.525" I.D.) Bottom - .116"	2001-On
50B	58428NB	AR	Center Support Bearing (2.525" I.D.) Bottom - .124"	2001-On
50B	58428NC	AR	Center Support Bearing (2.525" I.D.) Bottom - .132"	2001-On
56B	66429 ⁴	AR	Center Support to Forward Drum Brg. 1 Notch ID., .155"	1993-94
56B	66429B ⁴	AR	Center Support to Forward Drum Brg. 3 Notch ID., .140"	1993-94
56B	66429C ⁴	AR	Center Support to Forward Drum Brg. 4 Notch ID., .135"	1993-94
⁴ Use on 4.0L A4LD with Snap Type Shell.				
Located at the tip of the center support sealing ring hub.				
57B	66401	1	Direct/Reverse Drum Washer	1974-84
57B	66401C	1	Intermediate Brake (Direct) Drum Washer	1985-96
58B	66406	1	Forward Clutch Hub Washer Use w/3-Pinion Planet	1974-96
59B	66402	1	Forward Ring Gear Hub Washer Use w/3-Pinion Planet	1974-96
59B	K66426A	1	Forward Drum Thrust Bearing Use w/6-Pinion Planet	1990-96
60C	66422 ⁵	1	Forward Ring Gear Washer Use w/4-Pinion Planet	1985-96
⁵ 66422 is a bronze "Cap" shaped bushing/washer.				
60C	66422H ⁶	1	Forward Ring Gear Washer Use w/6-Pinion Planet	1990-On
⁶ 66422H is a flanged bushing that K66426A bearing rides on.				
61C	66404	1	Forward Planetary Washer Front	1974-84
61C	66424	1	Forward Planetary Thrust Bearing	1985-On
63C	66407	1	Sun Shell Thrust Washer All Except w/Snap Shell	1974-On
64C	66404	2	Reverse Planetary Thrust Washer .. Front & Rear, w/3-Pinion Planet	1974-96
64C	66411H	1	Reverse Planetary Thrust Washer Front, w/4 & 6-Pinion Planet	1985-96
64C	66412H	1	Reverse Planetary Thrust Washer Rear, w/4 & 6-Pinion Planet	1985-96
64C	58425	1	Reverse Planetary Needle Bearing Front	1997-On
64C	58423	1	Reverse Planetary Needle Bearing Rear	1997-On

A4LD / 5R55E

FORD C3/A4LD and 4/5R44E/55E - Cont'd.

ILL. NO.	PART NUMBER	PER CAR	DESCRIPTION	YEARS
THRUST WASHERS AND BEARINGS - Cont'd.				
65C	66868H	1	Lube Oil Sleeve (Plastic) 4.0 Litre	1985-96
65C	58868	1	Lube Oil Sleeve	1997-On
66C	66403	1	Reverse Hub to Inner Race Washer - 2.275" O.D.(Exc. 4.0L)	1974-96
66C	66403H	1	Reverse Hub to Inner Race Washer - 3.205" O.D.(4.0L Only)	1990-96
66C	K58427	1	Reverse Hub to Inner Race Bearing and Race Kit	1997-On
67C	K66414HT ⁷	1	Reverse Drum to Case Washer and Bronze Caps (Upgrade kit)	1990-96
			⁷ Located under the Rear Sprag Race.	
68C	66413H ⁷	1	Reverse Drum to Case Washer	1990-On
44D	58434	1	Case to Output Shaft Roller Bearing	1997-On
69D	66405	1	Governor Body to Case Washer	1974-On
45D	37426	1	Output Shaft Pilot Bearing Caged	1997-On
SEALING RINGS				
---	K66901	1	Sealing Ring Kit C3	1974-89
---	K66901H	1	Sealing Ring Kit A4LD	1985-96
---	K66901L	1	Sealing Ring Kit 4R44E/55E	1995-96
---	K58901	1	Sealing Ring Kit	1997-On
70A	66202T	1	Front Pump Support Scarf-Cut	1985-96
70A	58202T	1	Front Pump Support (Butt-Cut) Yellow Plastic	1995-On
70A	58202ST	AR	Front Pump Support (Solid) Gray Teflon	1997-On
71A	66201T	2	Overdrive Brake Drum Teflon	1985-96
71A	58201	2	Overdrive Brake Drum Plastic	1997-On
7B	66201	2	Direct/Reverse Drum (C3) Metal	1974-89
7B	66125 ⁸	2	Center Support Seal (Viton) Narrow - .083"	1985-92
7B	66125J ⁸	2	Center Support Seal (Viton) Wide - .102"	1993-96
7B	58201	2	Center Support Plastic	1997-On
72B	66200	2	Forward Clutch Cylinder Metal	1974-96
72B	58200	2	Forward Clutch Cylinder Plastic Replaces Brass	1997-On
73D	66205	3	Governor (C3) Metal	1974-89
73D	66126 ⁸	3	Governor (Use w/Cast Iron Support) Viton Rubber	1987-89
73D	66205H	3	Governor (Use w/Forged Support) Seal Plated	1985-96
			⁸ In Gasket and Rubber Sets.	
BANDS				
74A	66714 ⁹	1	Overdrive Band Except 1990-91 4.0 Litre	1985-On
74A	B66714 ⁹	1	Overdrive Band (Borg-Warner) Except 1990-91 4.0 Litre	1985-On
74A	66714H ⁹	1	Overdrive Band With 4.0 Litre	1990-91
75B	66714	1	Intermediate Band	1974-On
75B	B66714	1	Intermediate Band (Borg-Warner)	1974-On
76C	66720	1	Reverse Band - Rigid	1974-On
77E	26141	2	Band Adjustment Nut	1974-On
			⁹ Not included in MRK/MBK kits.	
TRANSMISSION OIL FILTERS				
80E	66600	1	Oil Filter C3	1974-89
80E	66601	1	Oil Filter A4LD - 2WD	1985
80E	66603	1	Oil Filter A4LD - 2WD	1986-88
80E	66605 ¹⁰	1	Oil Filter 2WD w/Deep Pan	1989-96
80E	66605E	1	Dacron Oil Filter (will retro to 1989) 2WD w/Deep Pan	1995-On

FORD C3/A4LD and 4/5R44E/55E - Cont'd.

ILL. NO.	PART NUMBER	PER CAR	DESCRIPTION	YEARS
OIL FILTERS - Cont'd.				
80E	66602	1	Oil Filter 4WD	1985
80E	66604 ¹⁰	1	Oil Filter 4WD	1986-96
80E	66604E	1	Dacron Oil Filter (will retro to 1989) 4WD	1995-On
81E	ATK-29	1	Oil Filter Kit C3	1974-89
81E	ATK-71	1	Oil Filter Kit A4LD - 2WD	1985
81E	ATK-85	1	Oil Filter Kit A4LD - 2WD	1986-88
81E	ATK-103 ¹⁰	1	Oil Filter Kit 2WD w/Deep Pan	1989-96
81E	ATK-157	1	Dacron Oil Filter Kit (will retro to 1989) 2WD w/Deep Pan	1995-On
81E	ATK-72	1	Oil Filter Kit 4WD	1985
81E	ATK-86 ¹⁰	1	Oil Filter Kit 4WD	1986-96
81E	ATK-158	1	Dacron Oil Filter Kit (will retro to 1989) 4WD	1995-On
¹⁰ Can be replaced with dacron style filters.				
---	66610	1	T.C.C. Screen See Page 2.32-2	1985-On
---	66611L	1	EPC Limit Screen See Page 2.32-2	1995-On
VACUUM MODULATORS				
84D	66820	1	Modulator Single	1974-89
84D	66820C	1	All Except High Altitude Single	1974-96
84D	66820M	1	Externally Adjusted Modulator (Dial) Single	1974-96
84D	66820T	1	Turbocharged Applications Single	1985-96
SPRAGS AND ROLLER CLUTCHES				
85B	66815C	1	Overdrive Sprag Assembly Metal Cage	1985-92
85B	66815J ¹¹	1	Overdrive Sprag Assembly Plastic Cage	1993-96
85B	58815 ¹¹	1	Overdrive Sprag Plastic Cage	1997-On
¹¹ Requires Installation Tool 66815JT.				
86C	K66903	1	Overrun Clutch Spring and Roller Kit . All C3 and A4LD Exc. 4.0 Litre	1974-96
86C	66814H	1	Overrun Clutch Sprag A4LD w/4.0 Litre	1990-96
86C	58813	1	Overrun (Low) Clutch Sprag 26 Element	1997-On
86C	58813A	1	Overrun (Low) Clutch Sprag 16 Element	1997-On
SERVO PISTONS (MOLDED RUBBER)				
87D	66828	1	Inter. Servo Piston (All C3) 2.100" O.D. - "AA/AB" Cover	1974-80
87D	66828	1	Inter. Servo Piston (4.0L) 2.100" O.D. - "AA/AB" Cover	1997-On
87D	66828A	1	Inter. Servo Piston (All C3) 1.945" O.D. - "BB" Cover	1978-83
87D	66828A	1	Inter. Servo Piston (V6 85-89 / 4.0L) 1.945" O.D. - "BB" Cover	1985-96
87D	66828A	1	Inter. Servo Piston (2.3L & 3.0L) 1.945" O.D. - "BB" Cover	1998-On
87D	66828B	1	Inter. Servo Piston (All C3) 1.830" O.D. - "CA/CB" Cover	1983-89
87D	66828B	1	Inter. Servo Piston (4 Cyl.) 1.830" O.D. - "CA/CB" Cover	1985-96
87D	66828B	1	Inter. Servo Piston (2.5L) 1.830" O.D. - "CA/CB" Cover	1998-99
87D	66828A	1	Inter. Servo Piston (2.5L) 1.945" O.D. - "BB" Cover	2000-On
87D	66828C	1	Inter. Servo Piston (2.9 & 3.0L) 1.775" O.D. - "DB" Cover	1990-96
87D	66828D	1	Inter. Servo Piston (2.3 & 3.0L) 1.655" O.D. - "FB" Cover	1990-96
87D	66828C	1	Inter. Servo Piston (2.3L, 3.0L) 1.775" O.D. - "DB" Cover	1997
87D	66828E	1	Inter. Servo Piston (Mustang w/2.3L) 1.710" O.D. - "EA/EB" Cover	1985-96
88D	58828	1	Overdrive Servo Piston (4.0L) 2.317" O.D. - "ZC" Cover	1997-On
88D	66828	1	Overdrive Servo Piston 2.100" O.D. - "AA/AB" Cover	1985-96
88D	66828	1	Overdrive Servo Piston (3.0L) 2.100" O.D. - "AA/AB" Cover	1997-On
88D	66828A	1	Overdrive Servo Piston 1.945" O.D. - "BB" Cover	1985-96
88D	66828A	1	Overdrive Servo Piston (2.3L & 2.5L) 1.945" O.D. - "BB" Cover	1997-On
88D	66828B	1	Overdrive Servo Piston (Mustang) 1.830" O.D. - "CA/CB" Cover	1990-96
89D	66829 ¹²	1	Intermediate Servo Cover Use w/66828 Servo	1985-96
89D	58829 ¹²	1	Intermediate Servo Cover Use w/58828 Servo	1997-On
¹² Provides a firmer 1-2 shift.				

A4LD / 5R55E

FORD C3/A4LD and 4/5R44E/55E - Cont'd.

ILL. NO.	PART NUMBER	PER CAR	DESCRIPTION	YEARS
SHIFT ENHANCEMENTS AND MISCELLANEOUS				
---	K66944	1	Valve Body Shift Kit (C3) TransGo	1974-89
---	K66943C	1	Junior Shift Kit (A4LD) TransGo	1985-96
---	ST66944C	1	Shift Correction Package (A4LD) Superior	1985-96
---	ST66944L	1	Shift Correction Package (4/5R44E/55E) Superior	1995-On
---	K66944L ¹³	1	Junior Shift Kit (4/5R44E/55E) TransGo	1995-On
			¹³ This kit addresses: Forward clutch failure, 2-3 cutloose, hard throttle 2-3 slip, 2-4 band failure, coast 3-2 clunk and a "no move" condition. It also allows shift feel adjustability.	
---	K66946L	1	Baseline Rebuilding Kit (Sonnax, Valve Body Must Do's - No Tools Required)	1995-On
---	4R44E-5R55E-ZIP		Zip-Kit (Sonnax)	1995-On
---	K66889F ¹⁴	1	P. R. Boost Valve And Sleeve Kit (A4LD - Low Ratio, .323" I.D.)	1985-96
---	K66889HD ¹⁴	1	P. R. Boost Valve And Sleeve Kit (A4LD - High Ratio, .388" I.D.)	1985-96
---	K66898W ¹⁴	1	P. R. Valve (Oversized), Boost Valve/Sleeve Kit (A4LD, use w/K66589 Tool)	1985-96
---	K66889L ¹⁴	1	P. R. Boost Valve Kit (4R44E, 4R55E) OEM Ratio	1995-On
---	K66889LHD ¹⁴	1	P. R. Boost Valve Kit (4R44E, 4R55E) Increased Ratio	1995-On
			¹⁴ Improves line rise, engagement quality and shift feel.	
---	K66898L ¹⁵	1	Pressure Regulator Sleeve Kit (Oversized, Use w/K66598L Tool Kit)	1995-On
---	K66768L ¹⁵	1	Pressure Regulator Springs (Elevated Pressure)	1995-On
			¹⁵ Improves Line Rise, Engagement Quality and Shift Feel.	
---	K66883L ¹⁶	1	Coast Clutch Valve Kit (Oversized, Use w/K66583L Tool Kit)	1995-On
			¹⁶ Addresses: 4R w/no 4th Gear; 5R w/no 2nd or 5th Gear.	
---	K66884L ¹⁷	1	TCC Modulator Valve Sleeve Kit (Oversized, Use w/K66584L Tool Kit)	1995-On
---	K66887L ¹⁷	1	TCC Regulator Sleeve Kit (Oversized, Use w/K66587L Tool Kit)	1995-On
---	66887L ¹⁷	1	TCC Regulator Valve (OEM Size)	1995-On
---	K66767L ¹⁷	1	TCC Regulator Valve Spring Kit (10 Springs)	1995-On
			¹⁷ Addresses: Converter Apply Issues, Code 628 & 1741 and TCC Surge or Cycle.	
---	K66882L ¹⁸	1	End Plug Kit (Oversized, Use w/K66582L Tool Kit)	1995-On
			¹⁸ Addresses: Loss of 3rd or 4th Gear when Hot.	
---	66891C	1	T.C.C. Anti-Shudder Spring A4LD, Enough For 2 Units	1985-96
---	66896C	1	Manual Valve Index A4LD, Eliminates Loose Linkage	1985-96
---	K66881C	1	V.B Relief Valve Kit (10 Pieces, Sonnax)	1985-On
90D	M126	2	Cooler Line Fittings	1983-On
---	66997 ¹⁹	1	Crankshaft to Flywheel Spacer (All 2.8 & 2.9L & 4.0L 91-10/94, No 3.0 Litre)	1985-96
---	58997 ¹⁹	1	Crankshaft to Flywheel Spacer (All 4.0L w/8 Bolts)	1997-On
			¹⁹ When worn, will cause a mis-alignment between the torque converter and the pump, resulting in a pump seal leak.	
ELECTRONIC COMPONENTS				
			A4LD:	
91E	66870C	1	Lock-Up Solenoid Normally Open	1985-96
91E	66870F	1	Lock-Up Solenoid (OEM) Normally Open	1985-96
92E	66874C	1	3-4 Shift Solenoid Normally Closed	1987-96
92E	66874F	1	3-4 Shift Solenoid (Upgraded OEM) Normally Closed	1987-96
93E	K66879CU	1	Solenoid and Case Connector Kit (Includes both solenoids and the case connector)	1987-96
94E	66878C	1	Case Connector with Diode (3-Pin) Dual Solenoid Units	1987-96
95E	66877	1	Neutral Safety Switch (4-Pin, Screw-In)	1974-96
95E	66877F	1	Neutral Safety Switch (5-Pin, Screw-In)	1985-96
105D	37876	1	Vehicle Speed Sensor w/Speedo-Cable	1990-92
105D	53876E	1	Vehicle Speed Sensor w/o Speedo-Cable	1990-96
105D	53855VC	1	Vehicle Speed Sensor Repair Harness.... Vehicle Harness Side	1990-96

FORD C3/A4LD and 4/5R44E/55E - Cont'd.

ILL. NO.	PART NUMBER	PER CAR	DESCRIPTION	YEARS
ELECTRONIC COMPONENTS - Cont'd.				
<u>4/5R44/55E :</u>				
96E	66871L	3	Shift Solenoids	1995-On
97E	66871L	1	Coast Clutch Solenoid	1995-On
98E	66870L	1	Torque Converter Clutch Solenoid	1995-96
98E	58870	1	Torque Converter Clutch Solenoid	1997-On
99E	66879L	1	Electronic Pressure Control Solenoid (Green Screens)	1995-96
99E	58879	1	Electronic Pressure Control Solenoid (Red Screens)	1995-On
100E	58883HD	1	EPC, TCC, SS2 and SS4 Solenoid Retaining Bracket (Updated)	1997-On
---	66869L	1	Internal Wiring Harness w/Temperature Sensor	1995-On
101B	66875L	1	Turbine Speed Sensor Inside Trans on Center Support	1995-On
102E	58875	1	Overdrive Drum Speed Sensor On Case (Some Models)	1997-99
103E	58875	1	High Clutch Drum Speed Sensor On Case (Some Models)	1999-On
104E	58876	1	Output Speed Sensor 5R44E, 5R55E	1997-On
105E	37876	1	Vehicle Speed Sensor w/Speedo-Cable	1995-On
105E	53876E	1	Vehicle Speed Sensor w/o Speedo-Cable	1995-On
---	37876D	1	Vehicle Speed Sensor In Differential - Large Body	1997-On
---	58876E	1	Vehicle Speed Sensor In Differential - Small Body	2003-On
---	53855VC	1	Vehicle Speed Sensor Repair Harness.... Vehicle Harness Side	1995-On
106E	K47877A	1	Transmission Range Sensor (TRS) 8-Pin	1995-96
106E	47877K	1	Transmission Range Sensor (TRS) 11-Pin	1997-On
---	66859LVC	1	Case Connector Repair Harness Vehicle Harness Side	1995-On
HARD PARTS				
Note : When ordering Hard Parts, please add the appropriate suffix : (-R) Reman, (-U) Used, (-A) Aftermarket.				
107A	66998U	1	Front Pump Adapter Plate	1974-96
107A	66998L	1	Front Pump Adapter Plate Except A4LD	1995-On
108A	K66965	1	Front Pump Gear Package (w/o O'Ring)	1974-94
108A	K66965L	1	Front Pump Gear Package (w/O'Ring)	1994-On
109A	66895C	1	Front Pump and Gears ([5] 6mm Pump Bolts)	1985-87
109A	66895F	1	Front Pump and Gears ([5] 8mm Pump Bolts)	1988-96
109A	66895L	1	Front Pump and Gears (6mm Pump Bolts) 4R44E/55E	1995-96
109A	58895	1	Front Pump Stator and Gears (No Pump Plate)	1997-On
110A	66804	1	Overdrive Brake Drum 6-Plate Type	1985-89
110A	66804H	1	Overdrive Brake Drum 6-Plate Type	1990-96
110A	58804	1	Overdrive Brake Drum	1997-On
111A	K66844 ²⁰	1	Overdrive Drum Piston Kit	1985-96
			²⁰ Kit includes: Aluminum Piston, Springs, Retainer and Snap Rings.	
112A	66866C	1	Overdrive Sun Gear to Overdrive Brake Drum Adapter	1985-On
113A	66855	1	Overdrive Sun Gear	1985-On
114A	66834	1	Overdrive Planetary A4LD	1985-95
114A	66834L	1	Overdrive Planetary (w/Exciter Wheel) 4R44E/55E	1995-On
115A	66854	1	Overdrive Ring Gear Use w/Metal O/D Sprag	1985-92
115A	66854J	1	Overdrive Ring Gear Use w/Plastic O/D Sprag	1993-On
116B	66807	1	Overdrive Center Shaft (Bushing Style Output Shaft) All	1985-89
116B	66807C	1	Overdrive Center Shaft (Bearing Style) All except 4.0 Litre	1990-96
116B	66807H	1	Overdrive Center Shaft 4.0 Litre	1990-96
116B	58807	1	Overdrive Center Shaft	1997-On
117B	K66809L ²¹	1	Center Support Kit Retrofits 1985-94 Units	1985-96
			²¹ Kit includes 66809L Center Support, 66428 Top Bearing and 66428C Bottom Bearing. Factory replacement for 1985-94 units.	

A4LD / 5R55E

FORD C3/A4LD and 4/5R44E/55E - Cont'd.

ILL. NO.	PART NUMBER	PER CAR	DESCRIPTION	YEARS
HARD PARTS AND MISCELLANEOUS - Cont'd.				
117B	66809A	1	Center Support Except C3, Non Snap Type Shell	1985-94
117B	66809L	1	Center Support Use w/Snap Type Shell	1993-94
117B	66809L	1	Center Support	1995-96
117B	58809	1	Center Support (Bearing Type)	1997-On
118B	66802D	1	Intermediate Brake Drum 5-Plate Type	1985-89
118B	66802H ²²	1	Intermediate Brake Drum 6-Plate Type	1990-96
118B	58802	1	Intermediate Brake Drum SOHC - Small Piston	1997-On
118B	58802B	1	Intermediate Brake Drum DOHC - Large Piston	1997-On
			²² Will work with all shell types.	
122B	66803G	1	Forward Clutch Cylinder 5-Plate Type	1985-96
122B	66803H ²³	1	Forward Clutch Cylinder 6-Plate Type	1990-96
122B	58803	1	Forward Clutch Cylinder (Bearing Type)	1997-On
			²³ Will work with all center supports.	
125C	66858H	1	Forward Ring Gear Hub (Large I.D.)	1990-On
126C	66859H	1	Forward Ring Gear	1990-On
127C	K66833H ²⁴	1	Forward Planetary Kit 6-Pinion Type	1974-On
			²⁴ Kit Includes: 6 Pinion Planet, Ring Gear Hub, K66426A and 66422H.	
			This kit will retrofit back to 1974 vehicles.	
127C	66833H	1	Forward Planetary 6-Pinion Type	1990-On
128C	66810C	1	Sun (Input) Shell Non-Snap Type	1985-96
128C	66810J	1	Sun (Input) Shell Snap Type	1993-94
128C	58810	1	Sun (Input) Shell (w/o Speed Sensor Slots)	1997-00
128C	58810D	1	Sun (Input) Shell (w/Speed Sensor Slots)	2001-On
129C	66860C	1	Forward Sun Gear (w/Bushings)	1974-On
129C	66860H	1	Forward Sun Gear (w/o Bushings)	1990-On
130C	66830C	1	Reverse Planetary (Exc. 4.0 Litre) 4 or 6-Pinion Steel	1987-96
130C	66830H	1	Reverse Planetary (4.0 Litre) 6-Pinion Steel	1990-96
130C	58830	1	Reverse Planetary	1997-On
131C	66864H	1	Rear Ring Gear	1990-96
132C	66863C	1	Rear Ring Gear Hub (Exc. 4.0 Litre) w/No Notches in Center of Hub	1985-96
132C	66863H	1	Rear Ring Gear Hub (4.0 Litre) w/Three Notches in Center of Hub	1990-96
132C	K58864	1	Rear Ring Gear and Hub (w/Recessed Area For Bearing)	1997-On
133C	66800C	1	Reverse Drum Roller Clutch Type	1985-96
133C	66800H	1	Reverse Drum Sprag Type	1990-96
133C	K58814	1	Rear Drum and Overrun Sprag Assembly (w/26-Element Sprag)	1997-On
133C	K58814A	1	Rear Drum and Overrun Sprag Assembly (w/16-Element Sprag)	1997-On
134C	66811	1	Inner Race (Use w/66811DJ Tool) Roller Type, Press Fit	1985-96
134C	66811H	1	Inner Race (Use w/66811DJ Tool) Sprag Type, Press Fit	1990-On
134C	K66811H	1	Inner Race, Caps and Washer Kit (use w/66811DJ Tool) Sprag Type, Press Fit	1990-On
135E	66520C	1	Governor Body (Aluminum Portion Only)385" Bore	1985-96
135E	66520F	1	Governor Body (Aluminum Portion Only)325" Bore	1985-96
150E	15-109A	1	Valve Body (Reman) A4LD, 1-Solenoid	1985
150E	15-109B	1	Valve Body (Reman) A4LD, 2-Solenoid (Both Small)	1988-96
150E	15-109C	1	Valve Body (Reman) A4LD, 2-Solenoid (Small & Large)	1988-96
150E	15-110	1	Valve Body (Reman) 4R44E (2.3 & 3.0 Litre)	1995
150E	15-111	1	Valve Body (Reman) All 4R55E (4.0 Litre)	1995-01
150E	15-111A	1	Valve Body (Reman) All 4R44E (2.3 & 3.0 Litre)	1996-01
150E	15-112	1	Valve Body (Reman) 5R55E (4.0 Litre)	1997-On
150E	15-112A	1	Valve Body (Reman) 5R44E (2.3 & 3.0 Litre)	1997-On
---	SBMV	1	Mercon "5" Fluid Supplement (Smart Blend)	1997-On
---	LGMV	1	Mercon "5" Fluid Supplement (Lubegard)	1997-On
---	T168C	1	Front Pump Alignment Tool	1997-On
---	66815JT	1	O/D Sprag Installation Tool	1997-On
---	TVBP-A4LD	1	Valve Body Retaining Clip Holder (TCS)	1997-On